

Use & Care Guide



For best results, a low-sudsing, HE High Efficiency Detergent must be used.



Models: 263.4120#

Kenmore® Front-Loading Automatic Washer

= color number

Transform SR Brands Management LLC
Hoffman Estates, IL 60179
www.kenmore.com

TABLES OF CONTENTS

1. APPLIANCE SAFETY	2
2. OTHER SAFETY INSTRUCTIONS.....	3
3. TECHNICAL SPECIFICATIONS	13
4. INSTALLATION.....	14
5. CONTROL PANEL OVERVIEW	18
6. USING YOUR WASHING MACHINE	21
7. PROGRAM TABLE	31
8. USER-MAINTENANCE INSTRUCTIONS.....	33
9. BODY / DRUM.....	36
10. TROUBLESHOOTING.....	37
11. AUTOMATIC FAULT WARNINGS AND WHAT TO DO	39
12. WARRANTY	40

1. APPLIANCE SAFETY

Your safety and the safety of others are very important.

We have provided many important safety messages in this manual and on your appliance. Always read and obey all safety messages.



The safety alert symbol will be followed by a signal word that calls attention to a safety message or messages or a property damage message or messages, and designates a degree or level of hazard seriousness.



DANGER

Danger indicates a hazardous situation that, if not avoided, will result in death or serious injury.



WARNING

Warning indicates a hazardous situation that, if not avoided, could result in death or serious injury.



CAUTION

Caution indicates a hazardous situation that, if not avoided, could result in minor or moderate injury.

All safety messages will alert you to what the potential hazard is, tell you how to reduce the chance of injury, and let you know what can happen if the instructions are not followed.

2. OTHER SAFETY INSTRUCTIONS

2.1 IMPORTANT SAFEGUARDS

- Do not install your machine on a carpet or such grounds that would prevent the ventilation of its base.
- The appliance is not intended for use by people (including children) with reduced physical, sensory or mental capabilities, or lack of experience and knowledge unless they have been given supervision or instruction concerning use of the appliance by a person responsible for their safety.
- Children of less than 3 years should be kept away unless continuously supervised.
- Call the nearest authorized service center for a replacement if the power cord malfunctions.
- Use only the new water inlet hose included with your machine when making water inlet connections to your machine. Never use old, used or damaged water inlet hoses.
- Children should not play with the appliance. Cleaning and user maintenance should not be made by children without supervision.



WARNING

RISK OF BURNS

Do not touch the drain hose or any discharged water while your Washing Machine is running. The high temperatures involved pose a burn risk.

RISK OF DEATH FROM ELECTRICAL CURRENT

- Do not connect your Washing Machine to the main electrical supply using an extension cord.
- Do not insert a damaged plug into a socket.
- Never remove the plug from the socket by pulling the cord. Always hold the plug.
- Never touch the power cord/plug with wet hands as this could cause a short circuit or electric shock.
- Do not touch your Washing Machine if your hands or feet are wet.
- A damaged power cord/plug can cause fire or give you an electric shock. When damaged it must be replaced, this should only be done by qualified personnel.
- Connect To Individual Branch-Circuit.

Risk of flooding

- Check the speed of water flow before placing the drain hose in a sink.
- Take necessary measures to prevent the hose from slipping.
- Water flow may dislodge the hose if it is not properly secured. Make sure the plug in your sink does not block the plug hole.

Danger of Fire

- Do not store inflammable liquids near your machine.
- The sulphur content of paint removers may cause corrosion. Never use paint removing materials in your machine.
- Never use products that contain solvents in your machine.
- Please ensure that garments loaded into your Washing Machine are free from foreign objects such as nails, needles, lighters and coins.

Risk of falling and injury

- Do not climb on your Washing Machine.
- Make sure hoses and cables do not cause a trip hazard.
- Do not turn your Washing Machine upside down or on its side.
- Do not lift your Washing Machine using the door or detergent drawer.

The machine must be carried by at least 2 people.



Child safety

- Do not leave children unattended near the machine. Children might lock themselves in the machine resulting in risk of death.
- Do not allow children to touch the glass door during operation. The surface becomes extremely hot and may cause damage to skin.
- Keep packaging material away from children.

- Poisoning and irritation may occur if detergent and cleaning materials are consumed or come into contact with the skin and eyes. Keep cleaning materials out of the reach of children.

IMPORTANT SAFETY INSTRUCTIONS

WARNING

To reduce the risk of fire, electric shock, or injury to persons when using your appliance, always follow basic precautions, including the following:

1. Read all instructions before using the appliance.
2. Do not wash articles that have been previously cleaned in, washed in, soaked in, or spotted with gasoline, dry-cleaning solvents, or other flammable or explosive substances, as they give off vapours that could ignite or explode.
3. Do not add gasoline, dry-cleaning solvents, or other flammable or explosive substances to the wash water. These substances give off vapours that could ignite or explode.
4. Under certain conditions, hydrogen gas may be produced in a hot-water system that has not been used for 2 weeks or more. **HYDROGEN GAS IS EXPLOSIVE.** If the hot-water system has not been used for such a period, before using a washing machine, turn on all hot-water faucets and let the water flow from each for several minutes. This will release any accumulated hydrogen gas. As the gas is flammable, do not smoke or

- use an open flame during this time.
5. Do not allow children to play on or in the appliance. Close supervision of children is necessary when the appliance is used near children.
 6. Before the appliance is removed from service or discarded, remove the door.
 7. Do not reach into the appliance if the drum is moving.
 8. Do not install or store this appliance where it will be exposed to the weather or outdoors.
 9. Do not tamper with controls.
 10. Do not repair or replace any part of the appliance or attempt any servicing unless specifically recommended in the user-maintenance instructions or in published user-repair instructions that you understand and have the skills to carry out.
 11. To reduce the risk of electric shock, disconnect this appliance from the power supply before attempting any user maintenance. Turning the controls to the OFF position does not disconnect this appliance from the power supply.

SAVE THESE INSTRUCTIONS

GROUNDING INSTRUCTIONS

This appliance must be grounded. In the event of malfunction or breakdown, grounding will reduce the risk of electric shock by providing a path of least resistance for electric current. This appliance is equipped with a cord having an equipment-grounding conductor and a grounding plug. The plug must be plugged into an appropriate outlet that is properly installed and grounded in accordance with all local codes and ordinances.



WARNING

Improper connection of the equipment-grounding conductor can result in a risk of electric shock. Check with a qualified electrician or serviceman if you are in doubt as to whether the appliance is properly grounded.

Do not modify the plug provided with the appliance – if it will not fit the outlet, have a proper outlet installed by a qualified electrician.

Your machine is for domestic use only. Using it for commercial purposes will cause your warranty to be cancelled.

This manual has been prepared for more than one model therefore your appliance may not have some of the features described within. For this reason, it is important to pay particular attention to any figures whilst reading the operating manual.

2.2 GENERAL SAFETY WARNINGS

- The necessary ambient temperature for operation of your Washing Machine is 59-77 °F.
- Where the temperature is below 32 °F, hoses may split or the electronic card may not operate correctly.
- Please ensure that garments loaded into your Washing Machine are free from foreign objects such as nails, needles, lighters and coins.
- Residue may build up on detergent and softeners exposed to air for a long period of time. Only put softener or detergent in the drawer at the beginning of each wash.
- Unplug your Washing Machine and switch off the water supply if the Washing Machine is left unused for a long time. We also recommend that you leave the door open to prevent build up of humidity inside the Washing Machine.
- Some water may be left in your Washing Machine as a result of quality checks during production. This will not affect the operation of your Washing Machine.
- The packaging of the machine could be hazardous to children. Do not allow children to play with the packaging or small parts from the Washing Machine.
- Keep the packaging materials in a place where children cannot reach them, or dispose of them appropriately.
- Use pre-wash programs only for very dirty laundry.

Never open the detergent drawer while the machine is running.

- In the event of a breakdown, unplug the machine from the main electrical supply and turn the water supply off. Do

not attempt to carry out any repairs. Always contact an authorised service agent.

- Do not exceed the maximum load for the washing program you have chosen.

Never force the door open when your Washing Machine is running.

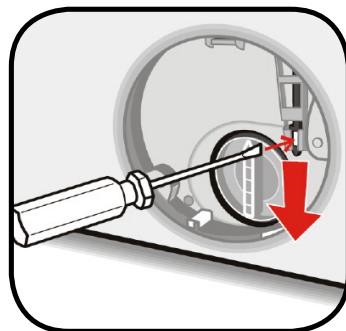
- Washing laundry containing flour may damage your machine.
- Please follow the manufacturers' instructions regarding the use of fabric conditioner or any similar products that you intend to use in your Washing Machine.
- Make sure that the door of your Washing Machine is not restricted and can be opened fully.
- Install your machine in a location that can be fully ventilated and preferably has constant air circulation.

Door emergency opening function

When the machine is running, any power cut or when the program is not yet complete, the door will remain locked.

To open the door;

1. Turn off the machine. Remove the power plug from the electrical outlet.
2. To drain the waste water, follow the instructions given in cleaning the pump filter section.
3. Pull the down the emergency opening mechanism with the help of a tool and open the door at the same time.
4. If the door, which was brought to the open position with the emergency release handle, is closed again, the door remains locked. The emergency release lever must be used again to open the door again when there is no power.



2.3 BEFORE USE

- Keep pets away from your machine.
- Please check the packaging of your machine before installation and the outer surface of the machine once the packaging has been removed. Do not operate the machine if it appears damaged or if the packaging has been opened.
- Your machine must only be installed by an authorized service agent. Installation by anyone other than an authorised agent may cause your warranty to be void.

- Only use your machine for laundry that is labelled as suitable for washing by the manufacturer.
- Your warranty does not cover damage caused by external factors such as fire, flooding and other sources of damage.
- Please do not throw away this user manual; keep it for future reference and pass it onto the next owner.

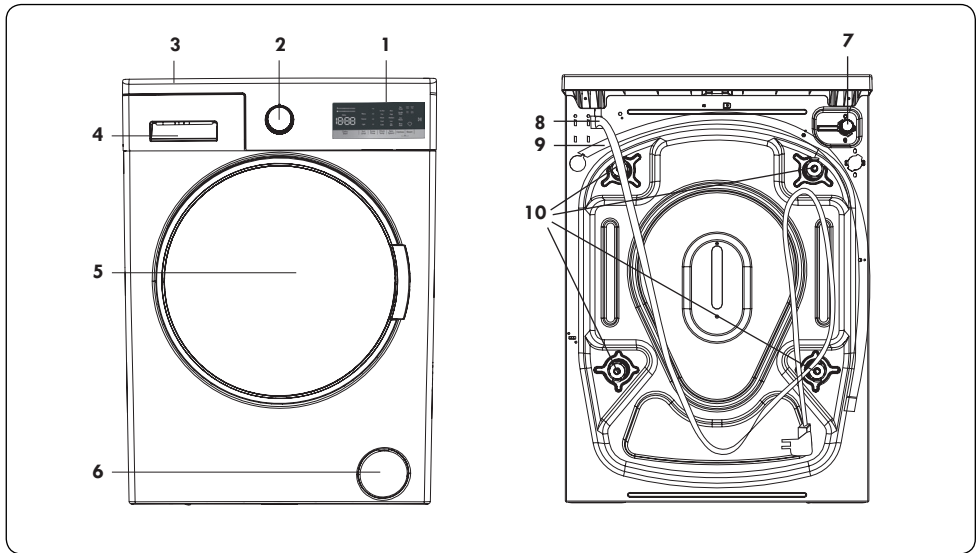
NOTE: Specifications for the machine may vary depending on the product purchased.

Disposal of your old machine



The symbol on the product or on its packaging indicates that this product may not be treated as household waste. Instead it shall be handed over to the applicable collection point for the recycling of electrical and electronic equipment. By ensuring this product is disposed of correctly, you will help prevent potential negative consequences for the environment and human health, which could otherwise be caused by inappropriate waste handling of this product. For more detailed information about recycling of this product, please contact your local city office, your household waste disposal service or the shop where you purchased the product.

3. TECHNICAL SPECIFICATIONS

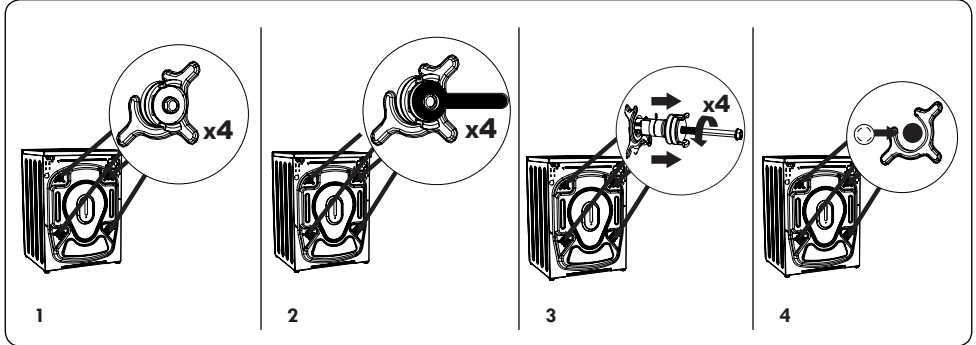


3.1 General Appearance

- | | |
|-------------------------|----------------------|
| 1. Electronic Display | 5. Drum |
| 2. Cycle Selection Knob | 6. Pump Filter Cover |
| 3. Upper Tray | 7. Water Inlet Valve |
| 4. Detergent Drawer | 8. Power Cable |
| | 9. Discharging Hose |
| | 10. Shipping Bolts |

4. INSTALLATION

Before operating the washing machine, remove the 4 shipping bolts and rubber spacers from the rear of the machine. If the bolts are not removed they may cause heavy vibration, noise and malfunction of the machine and cause the warranty to be void.

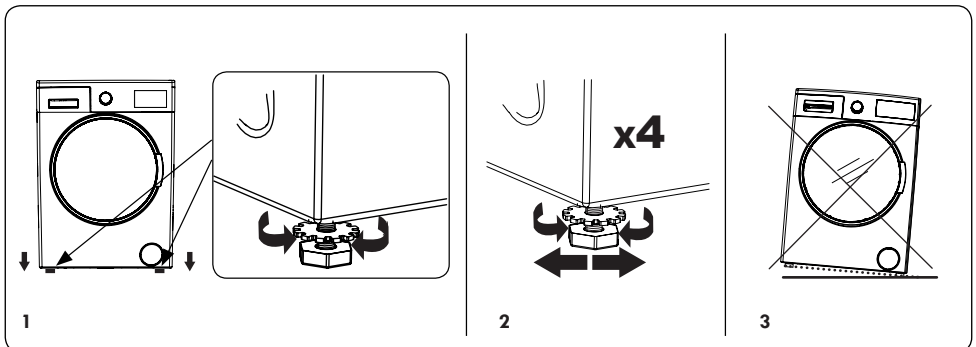


4.1 Removing the Shipping Bolts

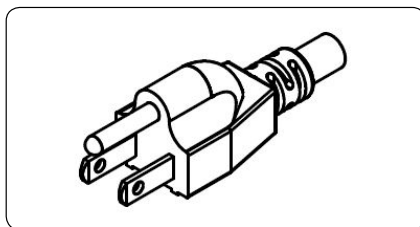
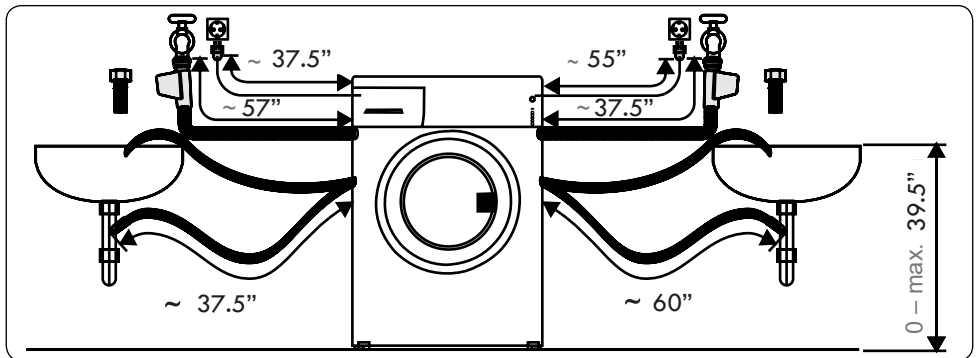
1. Before operating the washing machine, remove the 4 shipping bolts and rubber spacers from the rear of the machine. If the bolts are not removed, they may cause heavy vibration, noise and malfunction of the machine and void the warranty.
2. Loosen the shipping bolts by turning them counter-clockwise with an appropriate spanner.
3. Remove the shipping bolts with a straight pull.
4. Fit the plastic blanking caps supplied in the accessories bag into the gaps left by the removal of the shipping bolts. The shipping bolts should be stored for future use.

NOTE: Remove the shipping bolts before using the machine for the first time. Faults occurring due to the machine being operated with shipping bolts fitted are out of the scope of the warranty.

4.2 Adjusting the Feet / Adjusting Adjustable Stays



1. Do not install your machine on a surface (such as carpet) that would prevent ventilation at the base.
 - To ensure silent and vibration-free operation of your machine, install it on a firm surface.
 - You can level your machine using the adjustable feet.
 - Loosen the plastic locking nut.
2. To increase the height of the machine, turn the feet clockwise. To decrease the height of the machine, turn the feet counter-clockwise.
 - Once the machine is level, tighten the locking nuts by turning them clockwise.
3. Never insert cardboard, wood or other similar materials under the machine to level it.
 - When cleaning the ground on which the machine is located, take care not to disturb the level of the machine.



4.3 Electrical Connection

- Your Washing Machine requires a 110 -120 V~/60Hz electrical power supply.
 - The power cord of your washing machine is equipped with a grounded plug. This plug should always be inserted to a grounded socket of 10 amps.
- If connected to a circuit protected by fuses, use time-delay fuses with this appliance.
 - If you do not have a suitable socket and fuse conforming with this, please ensure the work is carried out by a qualified electrician.
 - We do not take responsibility for damage that occurs due to the use of ungrounded equipment.

4.4 Packaging and Environment

Removal of packaging materials

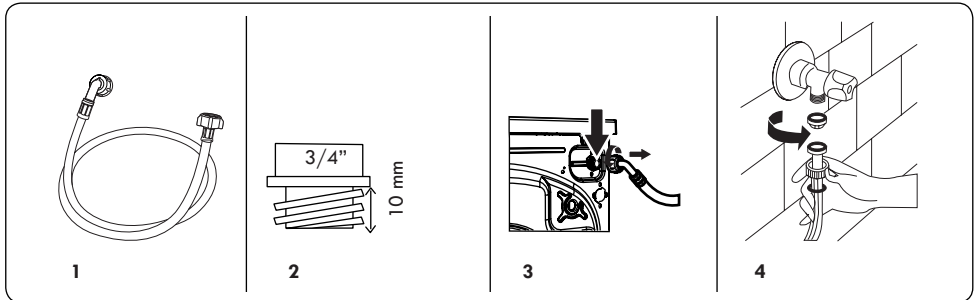
Packaging materials protect your machine from any damage that might occur during transportation. The packaging materials are environmentally friendly as they are recyclable. Use of recycled material reduces raw material consumption and decreases waste production.

4.5 Savings Information

Some important information to get the most efficient use out of your machine:

- Do not exceed the maximum load for the washing program you have chosen. This will allow your machine to run in energy saving mode.
- Do not use the pre-wash feature for lightly soiled laundry. This will help you save on the amount of electricity and water consumed.

4.6 Water Inlet Hose Connection



- 1.** Your machine has double water inlet connection (hot and cold) . The red capped hose should be connected to the hot water inlet.
 - To prevent water leaks at the joints, either 1 or 2 nuts (depending on your machine's specifications) are supplied in the packaging with the hose. Fit these nuts to the end(s) of the water inlet hose that connect to the water supply.
- 2.** Connect new water inlet hoses to a 3/4 ", threaded tap.
 - Connect the white capped end of the water inlet hose to the white water inlet valve on the rear side of the machine and the red capped end of the hose to the red water inlet valve (if applicable).
 - Hand tighten the connections. If in any doubt, consult a qualified plumber.
 - Water flow with pressure of 0. 1-1 Mpa will allow your machine to operate at optimum efficiency (pressure of 0. 1 Mpa means that more than 2.1 gallon (US) of water per minute will flow through a fully opened tap).
- 3.** Once you have made all of the connections, carefully turn the water supply on and check for leaks.

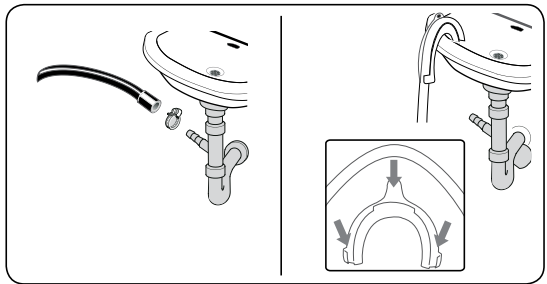
4. Ensure that the new water inlet hoses are not trapped, kinked, twisted, folded or crushed.

- If your machine has a hot water inlet connection, the temperature of the hot water supply should not be higher than 158°F.

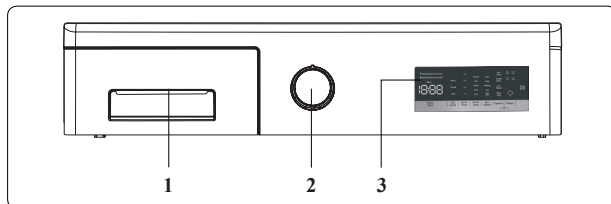
NOTE: Your Washing Machine must only be connected to your water supply using the supplied new fill hose. Old hoses must not be reused.

4.7 Water Discharge Connection

- Connect the water drain hose to a standpipe or to the outlet elbow of a household sink, using additional equipment.
- Never attempt to extend the water drain hose.
- Do not put the water drain hose from your machine into a container, bucket or bathtub.
- Make sure that the water drain hose is not bent, buckled, crushed or extended.
- The water drain hose must be installed at a maximum height of 39.5" from the ground.

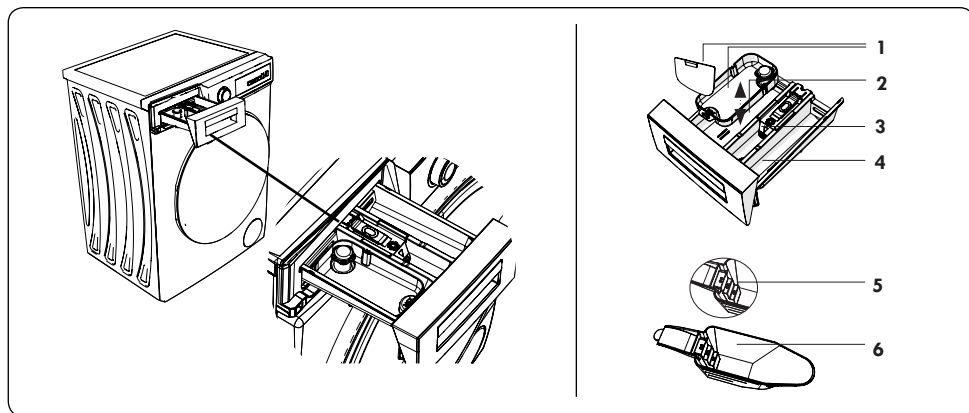


5. CONTROL PANEL OVERVIEW



1. Detergent Drawer
2. Cycle Selection Knob
3. Electronic Display

5.1 Detergent Drawer

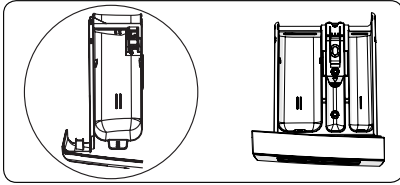


1. Liquid Detergent Attachments
2. Main Wash Detergent Compartment
3. Softener Compartment
4. Pre-Wash Detergent Compartment
5. Powder Detergent Levels
6. Powder Detergent Scoop (*)

(*) Specifications may vary depending on the machine purchased.

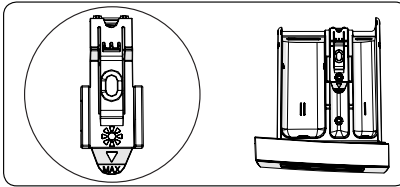
5.2 Sections

Main wash detergent compartment:



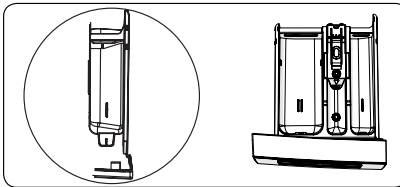
This compartment is for liquid or powder detergents or limescale remover. The fluid detergent level plate will be supplied inside your machine. (*)

Fabric conditioner, starch, detergent compartment:



This compartment is for softeners, conditioners or starch. Follow the instructions on the packaging. If softeners leave residue after use, try diluting them or using a liquid softener.

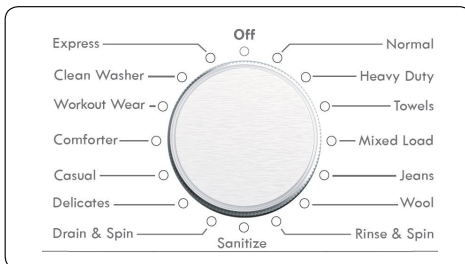
Pre-wash detergent compartment:



This compartment should be used only when the pre-wash feature is selected. We recommend that the pre-wash feature is used only for very dirty laundry.

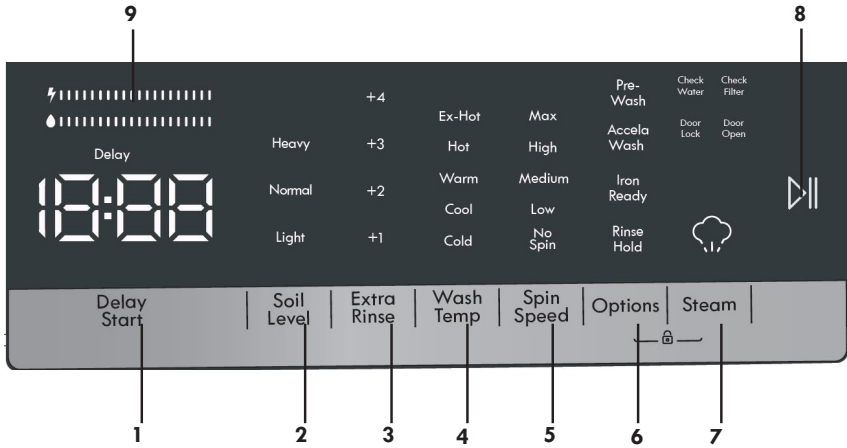
(*) Specifications may vary depending on the machine purchased.

5.3 Cycle Selection Knob



To select the desired program, turn the cycle selection knob either clockwise or counter-clockwise until the marker on the cycle selection knob points to the chosen program. Make sure that the cycle selection knob is set exactly to the program you want.

5.4 Electronic Display

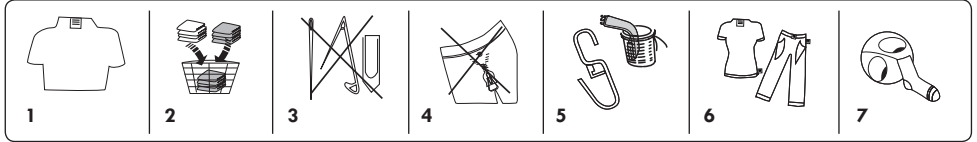


1. Delay Start function
2. Soil Level modifier
3. Extra Rinse function
4. Wash Temp modifier
5. Spin Speed modifier
6. Options
7. Steam function
8. Start Pause Button
9. Energy/Water Efficiency Bar

Washing / Spining Capacity: 22 lbs
Voltage: 120V/60 Hz
Wash Power: 60 W (Input)
Spin Power: 320 W (Input)
N/W: 175.3 lbs
G/W: 180.8 lbs
Unit Dimension: 33.3*23.5* 22.9 inches
Packaging Dimension:35* 25.8* 26.1 inches

6. USING YOUR WASHING MACHINE




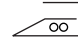
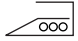






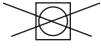



6.1 Preparing Your Laundry



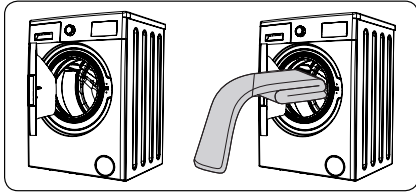
1. Follow the instructions given in the care labels on the clothing.
 - Separate your laundry according to type (cotton, synthetic, sensitive, wool etc.), washing temperature and the degree of dirtiness.
2. Never wash colored and white laundry together.
 - Dark textiles may contain excess dye and should be washed separately several times.
3. Ensure that there are no metallic materials on your laundry or in the pockets; if so, remove them.

! CAUTION: Any malfunctions which occur due to foreign materials damaging your machine are not covered by the warranty.

4. Close zippers and any hook and eye fasteners.
5. Remove the metallic or plastic hooks of curtains or place them in a washing net or bag.
6. Reverse textiles such as pants, knitwear, t-shirts and sweat shirts.
7. Wash socks, handkerchiefs and other small items in a washing net.

 Can be bleached	 Do not bleach	 Normal washing	 Maximum ironing temperature 302°F	 Maximum ironing temperature 392°F	 Do not iron
 Can be dry cleaned	 No dry cleaning	 Dry flat	 Drip dry	 Hang to dry	 Do not tumble dry
 Dry cleaning in gas oil, pure alcohol and R113 is allowed	 Perchloroethylene R11, R13, Petroleum	 Perchlorinetylene R11, R113, Gas oil			

6.2 Putting Laundry in the Machine

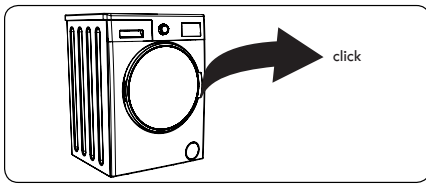


- Open the door of your machine.
- Spread your laundry evenly in the machine.

NOTE: Take care not to exceed the maximum load of the drum as this will give poor wash results and cause creasing. Refer to the washing program tables for information on load capacities.

The following table shows approximate weights of typical laundry items:

LAUNDRY TYPE	WEIGHT (ounces)
Towel	7.1
Linen	17.6
Bathrobe	42.3
Quilt cover	24.7
Pillow slip	7.1
Underwear	3.5
Tablecloth	8.8



- Load each item of laundry separately.
- Check that no items of laundry are trapped between the rubber seal and the door.
- Gently push the door until it clicks shut.
- Make sure the door is fully closed, otherwise the program will not start.

6.3 Adding Detergent to the Machine

The amount of detergent you will need to put in your machine will depend on the following criteria:

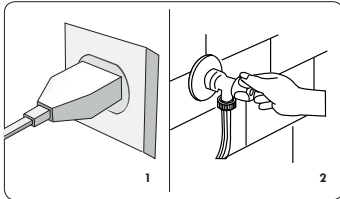
- If your clothes are only slightly soiled, do not pre-wash. Put a small amount of detergent (as specified by the manufacturer) into compartment II of the detergent drawer.
- If your clothes are excessively soiled, select a program with pre-wash and put $\frac{1}{4}$ of the detergent to be used into compartment I of the detergent drawer and the rest in compartment II.

- Use detergents produced for automatic washing machines. Follow the manufacturer's instructions on the amount of detergent to use.
- In areas of hard water, more detergent will be required.
- The amount of the detergent required will increase with higher washing loads.
- Put softener in the middle compartment of the detergent drawer. Do not exceed the MAX level.
- Thick softeners may cause clogging of the drawer and should be diluted.
- It is possible to use liquid detergent in all programs without a pre-wash. To do this, slide the fluid detergent level plate (*) into the guides in compartment II of the detergent drawer. Use the lines on the plate as a guide to fill the drawer to the required level.

(*) Specifications may vary depending on the machine purchased.

6.4 OPERATING INSTRUCTIONS

▲ WARNING - To reduce the risk of fire, electric shock, or injury to persons, read the IMPORTANT SAFETY INSTRUCTIONS before operating this appliance.



1. Plug your machine in to the electrical supply.
2. Turn on the water supply.
 - Open the machine door.
 - Evenly spread your laundry in the machine.
 - Gently push the door until it clicks shut.

6.5 Selecting a Program

Use the program tables to select the most appropriate program for your laundry.

6.6 Half-Load Detection System

Your machine features a half-load detection system.

If you put less than half the maximum load of laundry into your machine it will automatically set the half-load function, regardless of the program you selected. This will take place once the machine begins operation and adjusts the time depending on the load. This means that the selected program will take less time to complete and will use less water and energy.

6.7 Auxiliary Functions

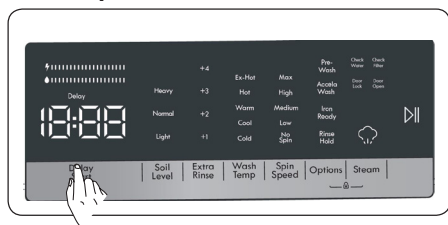
Before starting the program, you can select auxiliary functions if you wish so.

- Press the key of the auxiliary function you want to select.
- If the symbol of the auxiliary function is continuously on in the electronic display, the selected auxiliary function will be enabled.
- If the symbol of the auxiliary function is flashing in the electronic display, the selected auxiliary function will not be enabled.

Reason for not enabling the function:

- That auxiliary function might not be available for the selected washing program.
- The machine might have passed the step where that auxiliary function could be applied.
- The auxiliary function might be incompatible with another auxiliary function you have previously selected.

1. Delay Start function



You can use this auxiliary function to delay the start time of the washing cycle for 1 to 23 hours.

To use the delay function:

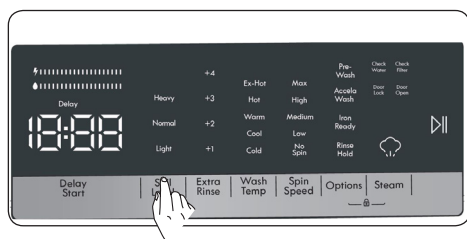
- Press the delay key once.
- "1h" will be displayed. The Delay Start LED will turn on in the electronic display.
- Press the delay key until you reach the time after which you want the machine to start the washing cycle.
- If you have skipped the delay time you would like to set, you can keep pressing the delay key until you reach that time again.
- To use the time delay function, you need to press the Start/Pause key to start the machine.

NOTE: After selecting the delay function, you can select other functions without touching the “Start/Pause” key, and then you can touch the “Start/Pause” key to enable time delay.

To cancel the delay function:

- If you did not press the Start/Pause key, keep touching the delay key until the electronic display shows the duration of the program you have selected. Once you see the program time on the electronic display, this means that the delay has been cancelled.
- If you have pressed the Start/Pause key to start the machine, you just need to touch the delay key once. Delay Start LED will go off on the electronic display, press the “Start/Pause” key to start the washing cycle.

2. Soil Level modifier

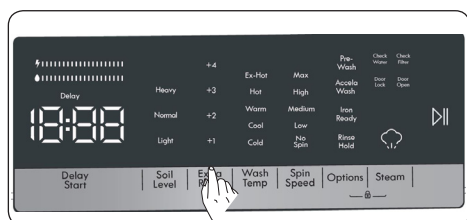


You can wash your laundries in shorter or longer durations, at lower or higher temperatures by selecting a soiling level depending on the soiling level on your laundries.

Soiling levels are automatically set in some programs. You can make changes at your discretion.

NOTE: If there are no changes in the level when you touch the soiling level key, it means there is no soiling level selection in the program you have selected.

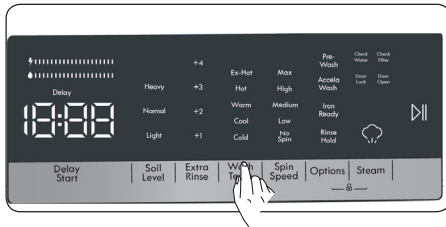
3. Extra Rinse function



You can use this auxiliary function for extra rinsing on your laundry. To enable the extra rinse function, keep pressing the options key until the extra rinse symbol (+1, +2, +3, +4) turns on. If the Extra Rinse LED is constantly on in the electronic display, it means that the auxiliary function is selected.

NOTE: When you want to select the extra rinse auxiliary function, if (+1, +2, +3, +4) does not appear on the display, this means that this feature is not available in the selected washing program.

4. Wash Temp modifier



You can use the Wash Temp button to set the temperature of the washing water for your laundry.

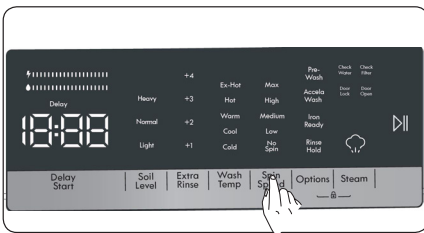
When you select a new program, the selected program's maximum temperature will be displayed on the Wash Temp display.

You can press the Wash Temp button to decrease the washing water temperature

gradually between the maximum water temperature of the selected program and cold water wash.

If you have skipped the washing water temperature you wanted to set, keep pressing the Wash Temp button to find the desired temperature again.

5. Spin speed selection

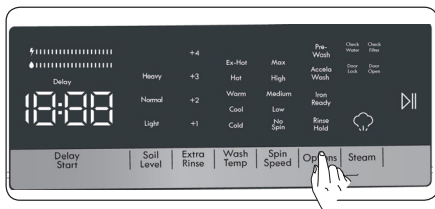


You can use the Spin Speed button to set the spin speed for your laundry. When you select a new program, the selected program's maximum spin speed will be displayed on the spin speed display.

You can press the Spin Speed button to decrease the spin speed gradually between the selected program's maximum spin speed and the spin cancelled option.

If you have skipped the spin speed you wanted to set, you can keep pressing the Spin Speed button to find the desired speed again.

6. Options



You can use auxiliary functions to make the best washing selection for your laundry. To do this, you can touch the options key on the display panel to enable the following:

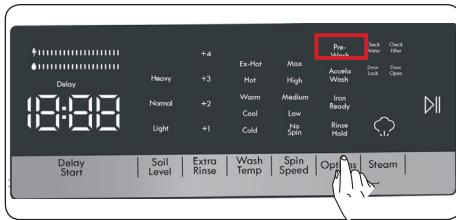
6.1 Prewash auxiliary function

6.2 Rapid wash auxiliary function

6.3 Easy ironing auxiliary function

6.4 Rinse hold auxiliary function

6.1 Pre Wash option

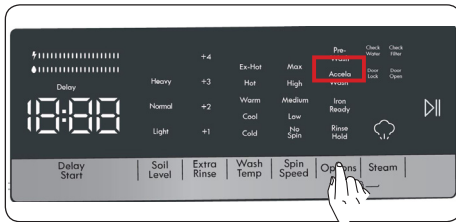


You can use this auxiliary function to perform pre-wash before the main wash cycle for your highly soiled laundry. When you use this function, you need to add detergent into the prewash dispenser of the detergent drawer. To enable the prewash auxiliary function, press the options key until the Pre Wash LED turns on. If the prewash LED is constantly on in

the electronic display, it means that the auxiliary function is selected

NOTE: When you want to select the prewash auxiliary function, if the Pre Wash LED does not light up on the display, this means that this feature is not available in the selected washing program.

6.2 Accela Wash option



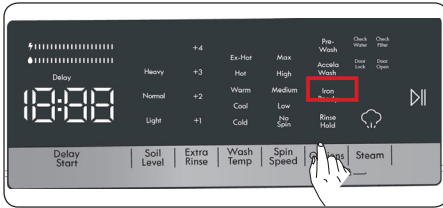
You can wash your laundry in a shorter time, using less energy and water by selecting this additional function. To enable Accela Wash, press the options key until the Accela Wash turns on. If the Accela Wash LED is constantly on in the electronic display, it means that the auxiliary function is selected.

We recommend that you only use this option if you are washing less than half the maximum

dry load for the selected program.

NOTE: If you put less than half the maximum load of laundry into your machine the half-load function will be automatically set, some of the program you selected. This means that the selected program will take less time to complete and will use less water and energy. When your machine detects half load, the Accela Wash LED is displayed automatically. When you want to select the Accela Wash auxiliary function, if it does not appear on the display, this means that this feature is not available in the selected washing program.

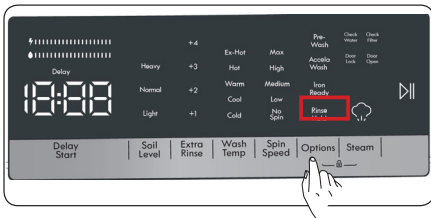
6.3 Iron Ready option



This auxiliary function allows you to have less creased clothes after washing. To enable the easy ironing auxiliary function, press the options key until the Iron Ready LED turns on. If the Iron Ready LED is constantly on in the electronic display, it means that the auxiliary function is selected.

NOTE: When you want to select the easy ironing auxiliary function, if the Iron Ready LED does not light up on the display, this means that this feature is not available in the selected washing program.

6.4 Rinse Hold function

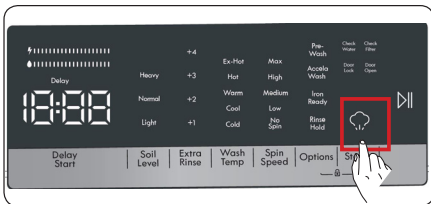


This function keeps your laundry soaking in the last rinse water. While your washing machine is keeping your laundry in the last rinse water, the Rinse Hold LED will flash on the electronic display. When you want to empty your laundry, press the Start/Pause button. Your machine will empty the water in it and finish the program without spinning. To enable the Rinse Hold

function, press the Options key until the Rinse Hold LED turns on. If the Rinse Hold LED is constantly on in the electronic display, it means that the function is selected.

NOTE: When you want to select the rinse hold auxiliary function, if the Rinse Hold LED does not light up on the display, this means that this feature is not available in the selected washing program.

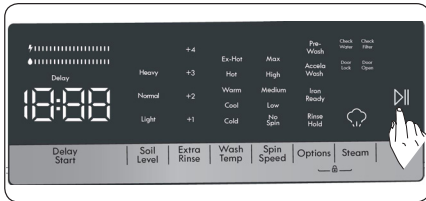
7. Steam function



The steam function helps make ironing quick and as easy. The steam used during washing penetrates and loosens the fibers to reduce creases and leave clothes soft and delicate. To enable the Steam function, press the Steam key. If the Steam LED is constantly on in the electronic display, it means that the function is selected.

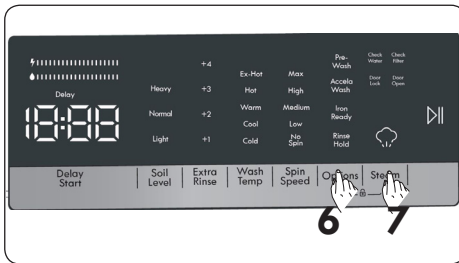
NOTE: When you want to select the steam system auxiliary function, if the Steam LED does not light up on the display, this means that this feature is not available in the selected washing program.

Start/Pause button



By pressing on the Start/Pause button, you may start the cycle you have selected or pause a cycle that is running. If you pause the cycle, the Start/Pause led on the electronic display will blink.

6.8 Control Lock



The Control Lock function allows you to lock the buttons so that the wash cycle you have chosen cannot be changed unintentionally.

To activate Control Lock, press and hold button 6 and 7 simultaneously for at least 3 seconds. "CL" will flash on the electronic display for 2 seconds when the Control Lock is activated.

If any button is pressed or if the cycle selection knob is turned while the Control Lock is active, the "CL" symbol will flash on the electronic display for 2 seconds.

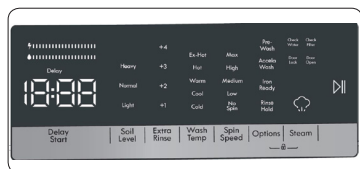
To deactivate the Control Lock, press and hold button 6 and 7 simultaneously for at least 3 seconds until the "CL" symbol on the electronic display disappears.

NOTE: The washing machine door will unlock if Control Lock is active and power to the appliance is cut off such as by unplugging or a power outage.

6.9 If you want to pause/cancel a running program or add laundry:

- ▷|| symbol key allows you to pause or restart the selected program. When you want to add laundry, you can use this function.
- Touch ▷|| symbol button for this. If the Door Open is displayed on the screen, you can open the loading door and add laundry.
- If the Door Lock is displayed on the screen, the step where you can add laundry has passed.
- If you want to cancel a running program, turn the program knob to “OFF” position. Your machine will stop washing process and the program will be cancelled. To drain the water in the machine, turn the program knob to any program position. Your machine will drain the water and cancel the program. You can select a new program and start the machine.

6.10 Cycle End



Your machine will automatically stop when the selected program ends.

- “End” will appear on the electronic display.
 - You can open the door the Door Open and take out the laundry. After taking out the laundry, leave the door open so that the inside of the machine can dry.
- Turn the program knob to OFF position.
 - Unplug the machine.
 - Turn off the water tap.

7. PROGRAM TABLE

Program	Washing temperature (°C)	Maximum dry laundry amount (lb)	Detergent compartment	Program duration (Min.)	Laundry type / Descriptions
(**) NORMAL	Ex-Hot-Hot-Warm*-Cool-Cold	22.05	2	113	Normally soiled cotton and linen fabrics. (Underwear, linen, tablecloth,towel (maximum 11 lb), bedclothes, etc.)
HEAVY DUTY	Ex-Hot-Hot*-Warm*-Cool-Cold	22.05	2	131	Very dirty cotton and flax textiles. (Underwear, linen, tablecloth, towel (maximum 11 lb), bedclothes, etc.)
TOWELS	Ex-Hot-Hot-Warm*-Cool-Cold	11.02	1&2	113	Dirty towel and flax textiles. (Underwear, linen, tablecloth, towel (maximum 5.5 lb), bedclothes, etc.)
MIXED LOAD	Hot*-Warm-Cool-Tap Cold	7.716	2	118	Dirty mix fibres, synthetics, colour and flax textiles can be washed together.
JEANS	Warm*-Cool-Cold	7.716	2	100	Black and dark items, mixed fibre or jeans wash inside out. Jeans often contains excess dye and may run during the first few washes. Wash light and dark coloured items separately.
WOOL	Warm*-Cool-Cold	5.512	2	58	Woollen laundries with machine wash labels.
RINSE & SPIN	Cold*	22.05	-	35	Provides an additional rinse to any type of laundry after the washing cycle. / You can use this program for any type of laundry if you want an additional spin step after the washing cycle.
SANITIZE	Ex-Hot*	11.02	2	200	Baby laundry
DRAIN & SPIN	** - -"	22.05	-	17	You can use the drain program to drain the water accumulated inside the machine (adding or removing laundry). To enable the drain program, turn the program knob to the spin/drain program. After you select "spin cancelled" using the auxiliary function key, the program will start to run. / You can use this program for any type of laundry if you want an additional spin step after the washing cycle.
DELICATES	Warm*-Cool-Cold	5.512	2	100	Laundry recommended for hand wash or sensitive laundry.
CASUAL	Hot*-Warm-Cool-Cold	7.716	2	120	Outdoor Clothing
COMFORTER	Hot*-Warm-Cool-Cold	-	2	113	For washing a fibre duvet with a machine washable label. (max.5.5 lb)
WORKOUT WEAR	Warm*-Cool-Cold	7.716	2	100	Sportswear.
CLEAN WASHER	Ex-Hot*	-	2	90	For cleaning the drum.
(***) EXPRESS	Ex-Hot-Hot-Warm*-Cool*-Cold	4.409	2	12	In a short time of 12 minutes, Lightly soiled, cotton, colored and linen textiles your can wash.

NOTE: PROGRAM DURATION MAY CHANGE ACCORDING TO THE AMOUNT OF LAUNDRY, TAP WATER, AMBIENT TEMPERATURE AND SELECTED ADDITIONAL FUNCTIONS.

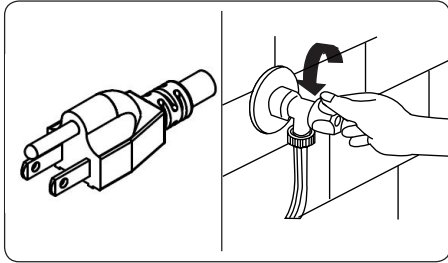
(*) Washing water temperature of the program is the factory default.

(**) Normal program is most energy efficiency program with all wash temperature selections.

(***) Due to the short washing time of this program, we recommend that less detergent is used. The program may last longer than 12 minutes if your machine detects an uneven load. You can open the door of your machine 2 minutes after the completion of a washing operation. (The 2 minute period is not included in the program duration).

8. USER-MAINTENANCE INSTRUCTIONS

8.1 WARNING




To reduce the risk of electric shock, disconnect this appliance from the power supply before attempting any user maintenance. Turning the controls to the OFF position

does not disconnect this appliance from the power supply.

Remove the plug from the socket before carrying out maintenance and cleaning of your machine.

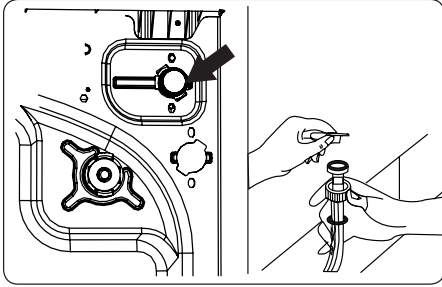
Turn off the water supply before starting maintenance and cleaning of your machine.

 **CAUTION:** Do not use solvents, abrasive cleaners, glass cleaners or all-purpose cleaning agents to clean your Washing Machine. They may damage the plastic surfaces and other components with the chemicals they contain.

Replacement of drive belt is to be performed only by an authorized service agent. Only a manufacturer original spare belt must be used.

8.2 Water Inlet Filters

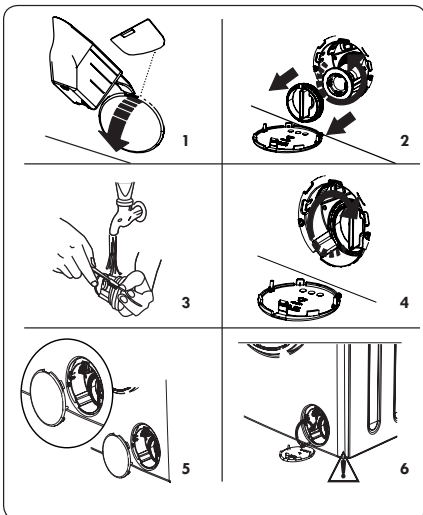
Water inlet filters prevent dirt and foreign materials from entering your machine. We recommend that these filters are cleaned when your machine is unable to receive sufficient water, although your water supply is on and the tap is open. We recommend that you clean your water inlet filters every 2 months.



- Unscrew the water inlet hose(s) from the Washing Machine.
 - To remove the water inlet filter from the water inlet valve, use a pair of long-nosed pliers to gently pull on the plastic bar in the filter.
 - A second water inlet filter is located in the tap end of the water inlet hose. To remove the second water inlet filter, use a pair of long-nosed pliers to gently pull on the plastic bar in the filter.
-
- Clean the filter thoroughly with a soft brush and wash with soapy water and rinse thoroughly. Re-insert the filter by gently pushing it back into place.

! CAUTION: The filters at the water inlet valve may become clogged due to water quality or lack of required maintenance and may break down. This may cause a water leak. Any such breakdowns are out of the scope of the warranty.

8.3 Pump Filter



The pump filter system in your Washing Machine prolongs the life of the pump by preventing lint from entering your machine. We recommend that you clean the pump filter every 2 months.

The pump filter is located behind the cover on the front-lower right corner.

To clean the pump filter:

1. You may use the washing powder spade (*) supplied with your machine or liquid detergent level plate to open the pump cover.
 2. Lodge the end of the powder spade or liquid detergent level plate in the opening of the cover and gently press backwards. The cover will open.
- Before opening the filter cover, place a container under the filter cover to collect any

water left in the machine.

- Loosen the filter by turning anticlockwise and remove by pulling. Wait for the water to drain.

NOTE: Depending on the amount of water inside the machine, you may have to empty the water collection container a few times.

3. Remove any foreign materials from the filter with a soft brush.
4. After cleaning, re-fit the filter by inserting it and turning clockwise.
5. When closing the pump cover, ensure that the mountings inside the cover meet the holes on the front panel side.
6. Close the filter cover.

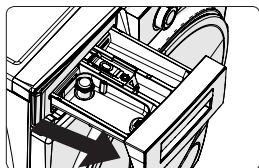
⚠ WARNING: The water in the pump may be hot, wait until it has cooled down before carrying out any cleaning or maintenance.

(*) Specifications may vary depending on the machine purchased.

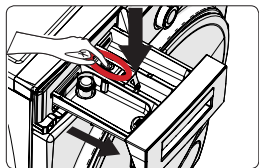
8.4 Detergent Drawer

The use of detergent may cause residual build up in the detergent drawer over time. We recommend that you remove the drawer every 2 months to clean the accumulated residue.

To remove the detergent drawer:

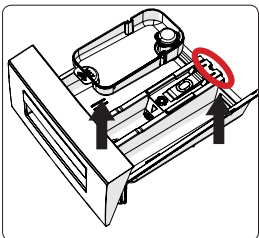


- Pull the drawer forwards until it is fully extended.



- Press the tab inside the detergent drawer and continue pulling to remove the detergent drawer.

- Remove the detergent drawer and disassemble the trays. Clean thoroughly to completely remove any softener residue. Rinse with a brush and lots of water. Re-insert the components after cleaning and check that they are seated properly. Dry the detergent drawer with a towel or dry cloth and insert it back in the washing machine.



- Rinse with a brush and lots of water.

- Collect the residues inside the detergent drawer slot so that they don't fall inside your machine.

- Dry the detergent drawer with a towel or dry cloth and place it back

Do not wash your detergent drawer in a dishwasher.

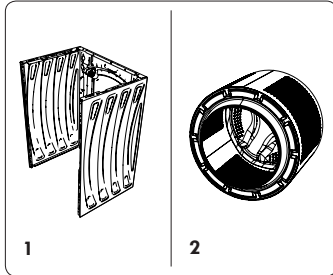
Liquid detergent apparatus(*)

For the cleaning and maintenance of the liquid level detergent apparatus, remove the apparatus from its location as shown in the picture below, and thoroughly clean the remaining detergent

residues. Replace the apparatus. Make sure that no residual material remains inside the siphon.

(*) Specifications may vary depending on the machine purchased.

9. BODY / DRUM



1. Body

Use a mild, non-abrasive cleaning agent, or soap and water, to clean the external casing. Wipe dry with a soft cloth.

2. Drum

Do not leave metallic objects such as needles, paper clips, coins etc. in your machine. These objects lead to the formation of rust stains in the drum. To clean such rust stains, use a non-chlorine cleaning agent and follow the

instructions of manufacturer of the cleaning agent. Never use wire wool or similar hard objects for cleaning rust stains.

10. TROUBLESHOOTING

Repair of your machine should be carried out by an authorized service company. If your machine requires repair or if you cannot solve an issue with the information provided below, then you should:

- Unplug your machine from the main power supply outlet.
- Turn off the water supply.

FAULT	POSSIBLE CAUSE	TROUBLESHOOTING
Your machine does not start.	Machine not plugged in.	Plug machine in.
	Fuses are faulty.	Replace the fuses.
	No mains power supply.	Check mains power.
	Start/Pause button not pressed.	Press the Start/Pause button.
	Cycle Selection Knob 'off' position.	Turn the Cycle Selection Knob to the desired position.
	The machine door is not completely closed.	Close the machine door.
Your machine does not intake water.	Water tap is turned off.	Turn tap on.
	Water inlet hose may be twisted.	Check water inlet hose and untwist.
	Water inlet hose clogged.	Clean water inlet hose filters. (*)
	Inlet filter clogged.	Clean the inlet filters. (*)
	The machine door is not completely closed.	Close the machine door.
Your machine does not discharge water.	Drain hose clogged or twisted.	Check the drain hose, then either clean or untwist.
	Pump filter clogged.	Clean the pump filter. (*)
	Laundry is too tightly packed together in the drum.	Spread your laundry in the machine evenly.
Your machine vibrates.	The feet have not been adjusted.	Adjust the feet. (**)
	Transit bolts fitted for transportation have not been removed.	Remove the transit bolts from the machine. (**)
	Small load in the drum.	This will not prevent operation of your machine.
	Your machine is overloaded with laundry or laundry is unevenly spread.	Do not overload the drum. Spread laundry evenly in the drum.
	Your machine rests on a hard surface.	Do not set up your Washing Machine on a hard surface.


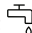

FAULT	POSSIBLE CAUSE	TROUBLESHOOTING
Excessive foam is formed in the detergent drawer.	Excessive amount of detergent used.	Press the Start/Pause button. To stop the foam, dilute one tablespoon of softener into 1/2 litre of water and pour into the detergent drawer. Press the Start/Pause button after 5-10 mins.
	Wrong detergent used.	Only use detergents produced for automatic Washing Machines.
Unsatisfactory washing result.	Your washing is too dirty for the program selected.	Use the information in the program tables to select the most appropriate program.
	Amount of detergent used insufficient.	Use the amount of detergent as instructed on the packaging.
	There is too much laundry in your machine.	Check that the maximum capacity for the selected program has not been exceeded.
Unsatisfactory washing result.	Hard water.	Increase the amount of detergent following the manufacturer's instructions.
	Your laundry is too tightly packed together in the drum.	Check that your laundry is spread out.
As soon as the machine is loaded with water, water discharges.	The end of water drain hose is too low for the machine.	Check that the drain hose is at a suitable height. (**).
No water appears in the drum during washing.	No fault. Water is in the unseen part of the drum.
Laundry has detergent residue.	Non-dissolving particles of some detergents may appear on your laundry as white spots.	Perform an extra rinse, or clean your laundry with a brush after it dries.
Grey spots appear on the laundry.	There is untreated oil, cream or ointment on your laundry.	Use the amount of detergent as instructed on the packaging in the next wash.
The spin cycle does not take place or takes place later than expected.	No fault. The unbalanced load control system has been activated.	The unbalanced load control system will try to spread your laundry. The spinning cycle will begin once your laundry is spread. Load the drum evenly for the next wash.

(*) See the chapter regarding maintenance and cleaning of your machine.

(**) See the chapter regarding installation of your machine.

11. AUTOMATIC FAULT WARNINGS AND WHAT TO DO

Your Washing Machine is equipped with a built-in fault detection system, indicated by a combination of flashing wash operation lights. The most common failure codes are shown below.

TROUBLE CODE	POSSIBLE FAULT	WHAT TO DO
E01 	The door of your machine is not shut properly.	Shut the door properly until you hear a click. If your machine persists to indicate fault, turn off your machine, unplug it and contact the nearest authorized service agent immediately.
E02 	The water pressure or the water level inside the machine may be low.	Check the tap is fully turned on. Mains water may be cut-off. If the problem still continues, your machine will stop after a while automatically. Unplug the machine, turn off your tap and contact the nearest authorized service agent.
E03 	The pump is faulty or pump filter is clogged or electrical connection of the pump is faulty.	Clean the pump filter. If the problem persists, contact the nearest authorized service agent. (*)
E04	Your machine has excessive amount of water.	Your machine will discharge water by itself. Once the water has drained, turn off your machine and unplug it. Turn off the tap and contact the nearest authorized service agent.

(*) See the chapter regarding maintenance and cleaning of your machine.

12. WARRANTY

KENMORE LIMITED WARRANTY

WITH PROOF OF SALE the following warranty coverage applies when this appliance is correctly installed, operated and maintained according to all supplied instructions.

One Year on Appliance

FOR ONE YEAR from the date of original sale (or, for deliveries in the State of California, one year from the date of original delivery) this appliance is warranted against defects in material or workmanship. A defective appliance will receive free repair. If the appliance cannot be repaired it will be replaced free of charge.

Lifetime on Washer Drive Motor

FOR AS LONG AS IT IS USED from the date of sale, a free replacement will be supplied for a defective washer drive motor.* If the defect appears within the first year, a new motor will be installed at no charge. If the defect appears after the first year, a new motor will be supplied but not installed at no charge. This Lifetime warranty covers only the washer drive motor, and does not apply to any other related component or mechanism. You are responsible for the labor cost of motor installation after the first year from the date of sale. *Defects must be verified by a Kenmore authorized service technician.

For warranty coverage details to obtain free repair, visit the web page: www.kenmore.com/warranty

All warranty coverage applies for only 90 DAYS from the sale date if this appliance is ever used for other than private household purposes.

This warranty covers ONLY defects in material and workmanship, and will NOT pay for:

1. Expendable items that can wear out from normal use, including but not limited to filters, belts, bags or screw-in base light bulbs.
2. A service technician to clean or maintain this appliance, or to instruct the user in correct appliance installation, operation and maintenance.
3. Service calls to correct appliance installation not performed by Kenmore authorized service agents, or to repair problems with house fuses, circuit breakers, house wiring, and plumbing or gas supply systems resulting from such installation.
4. Damage to or failure of this appliance resulting from installation not performed by Kenmore authorized service agents, including installation that was not in accord with electrical, gas or plumbing codes.
5. Damage to or failure of this appliance, including discoloration or surface rust, if it is not correctly operated and maintained according to all supplied instructions.
6. Damage to or failure of this appliance, including discoloration or surface rust, resulting from accident, alteration, abuse, misuse or use for other than its intended purpose.
7. Damage to or failure of this appliance, including discoloration or surface rust, caused by the use of detergents, cleaners, chemicals or utensils other than those recommended in all instructions supplied with the product.
8. Damage to or failure of parts or systems resulting from unauthorized modifications made to this appliance.
9. Service to an appliance if the model and serial plate is missing, altered, or cannot easily be determined to have the appropriate certification logo.


Disclaimer of implied warranties; limitation of remedies

Customer's sole and exclusive remedy under this limited warranty shall be product repair or replacement as provided herein. Implied warranties, including warranties of merchantability or fitness for a particular purpose, are limited to one year on the appliance and for as long as used on the washer drive motor, or the shortest period allowed by law. Seller shall not be liable for incidental or consequential damages. Some states and provinces do not allow the exclusion or limitation of incidental or consequential damages, or limitation on the duration of implied warranties of merchantability or fitness, so these exclusions or limitations may not apply to you.

This warranty applies only while this appliance is used in the United States.

This warranty gives you specific legal rights, and you may also have other rights which vary from state to state.

Transform SR Brands Management LLC
Hoffman Estates, IL 60179

 **WARNING:** This product can expose you to chemicals including Diisononyl Phthalate (DINP) which is known to the State of California to cause cancer.
For more information go to www.P65Warnings.ca.gov

Kenmore®

Customer Care Hotline

To schedule in-home repair service
or order replacement parts

Para pedir servicio de reparación
a domicilio, y ordenar piezas

1-844-553-6667

www.kenmore.com



52425051