



AGArangeusa.com

R7 100 CLASSIC CAST IRON

MODEL: AR7339

The AGA R7 Classic Cast Iron Collection is fully electric, controllable, easy-to-use and offers a host of refined features for flexible cooking. The ovens are designed to be left on, so that they are always available for use and provide a gentle warmth to keep your kitchen cozy.

OVERVIEW

As part of the 24/7 Radiant Heat collection, the AGA R7 100 models have ovens that are on all the time but with hotplates that can be switched on and off as required, to save energy, and heat up in 10-12 minutes. R7 models keep the kitchen cozy and are ready to cook the moment you are.

AGA R7 ranges feature a clear, easy-to-use control panel and offer four different oven temperature settings for flexibility and energy saving, including an economy low mode and a high temperature option to provide a boost when you need it. The AGA R7 features three ovens for roasting, baking and simmering. There's also two hotplates which can be switched on and off independently of the ovens, and each other, and heat up in 10 to 12 minutes.

The cast-iron ovens also feature an Altrashell™ coating, which seals the cast-iron and makes them easier to clean. For further ease, the inner door liners can be removed and placed in a dishwasher.

RANGE DIMENSIONS

When surveying for a cooker installation the actual clearance required for the 'body' of the appliance should be increased by 3/8" (10mm) beyond the figures quoted above. This allows safe margin to take into account the natural dimensional variations found in major castings. In particular the width across the appliance recess could be critical.

A	B	C	D	E	F	G	H	J	K	L	M
38 7/8"	37 7/8"	35 1/8"	26 3/4"	54 1/8"	29 7/8"	45 1/8"	27 7/8"	4 1/8"	1/8"	38 3/4"	24 3/4"

SPECIFICATIONS

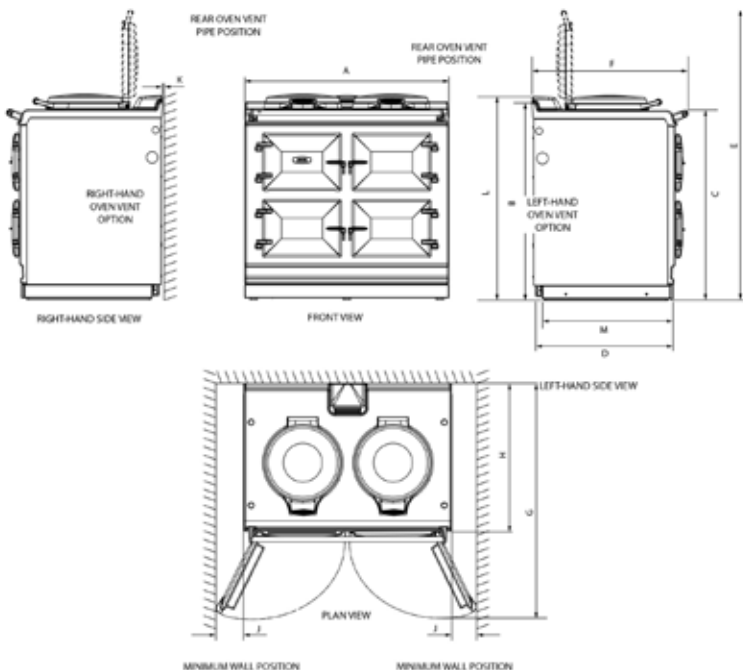
- Product Dimensions: 36" H x 38 7/8" W x 27 1/2" D (inches)
- Shipping weight (lbs): 838 lbs. (includes range, crate & pallet) / 815 lbs. (range only)

WARRANTY

- 1 Year Warranty for parts and labor, subsequent 4 years - parts only

FINISHES

The AGA Classic R7 100 is available in 16 contemporary colors. (see next page)





AGArangeusa.com

R7 100 CLASSIC CAST IRON

AGA R7 COLOR FINISHES

The AGA Classic R7 100 is available in 16 contemporary colors.



OLIVINE



AUBERGINE



BLACK



CREAM



DARK BLUE



DUCK EGG BLUE



PEWTER



WHITE



PEARL ASHES



SLATE



SALCOMBE BLUE



LINEN



DOVE



DARTMOUTH BLUE



BLUSH



BRITISH RACING GREEN

NOTE: Colors not in stock could have a 4-12 week lead time (check for availability)



AGArangeusa.com

R7 100 CLASSIC CAST IRON

The AGA R7 has the traditional cast iron ovens with independently controlled hotplates.

INSULATED COVERS

The distinctive hallmark of the AGA, the highly polished stainless steel insulated covers are brought down over the hotplates to contain the heat when on and protect the hotplate when off. Individually assembled by hand.

ENAMEL TOP

The enamel top surrounds the hotplates. It will become warm when your hotplates are in use. Although it is not a cooking surface it may be used to keep foods warm, melting butter, and dehydrating leafy herbs.

BOILING PLATE APPROX. 626°F

The hottest of the two hotplates - use for boiling, grilling, stir-frying, making toast and anything requiring very high heat. With electric elements embedded into the cast iron, this plate heats up in 12 minutes from cold.

SIMMERING PLATE APPROX. 392°F

As with the Boiling Plate, this hot plate offers constant heat throughout the cast iron in under 10 minutes. Large enough to hold three sauce pans and perfect for making pancakes, eggs or quesadillas directly on the griddle-like surface.



CONTROL PANEL

The AGA R7 ranges feature a discreetly housed control panel for all oven operations.

ROASTING OVEN

APPROX. 425° - 475°F

Can be used for broiling at the top and shallow frying at the bottom due to its zone heating. Roast, bake or grill with perfect results.

EASY TO CLEAN

A special Altrashell™ coating seals the surface of the cast iron ovens making them easier to clean.

BAKING OVEN

APPROX. 325° - 375°F

A medium heat oven perfect for cakes, cookies, lasagna and pies, not to mention roasting meat and poultry. Cook sweet and savory dishes at the same time without the fear of flavors mixing.

SLOW COOKING OVEN

APPROX. 225° - 255°F

Perfect for slow cooking casseroles, one pot meals and meats as well as steaming root vegetables and making rice. Cooking slowly and gently allow foods to retain their nutrients and goodness.

NEW DOOR LINERS

New cooler-touch stainless steel door liners on the roasting, baking and simmering ovens. For ease of cleaning, these new patented door liners can be removed and placed right in the dishwasher.

ROASTING OVEN APPROX. 425° - 475°F

This high temperature power house is used for starting off many foods. The top of the oven is used to grill food, while the center is used for fast roasting meat and poultry. The floor of this oven is perfect for cooking pizzas and it is also a 'hidden hotplate', where pans may be placed to oven-fry foods such as steak.

BAKING OVEN APPROX. 325° - 375°F

The baking oven is maintained at a moderate heat, making it perfect for baking all kinds of cakes and cookies. It is ideal for moderate roasting, cooking fish and deep or layered dishes such as lasagne.

SLOW COOKING OVEN APPROX. 225° - 255°F

Once food has been brought to temperature somewhere else on the range, it can simply be transferred to this oven where it will be bathed with gentle radiant heat and finish cooking.

BOILING PLATE APPROX. 625°F

The AGA boiling plate delivers a really fast punch of heat for quickly boiling water, maintaining a rolling boil and for fast stir-fries in a wok. Ridged griddle pans are also used here for authentic grilled steaks, chops and cutlets. Both hotplates will accommodate three good-sized saucepans at the same time - to adjust the rate of cooking, simply partially offset to the side of the hotplate once the pan has come to temperature.

SIMMERING PLATE APPROX. 392°F

The cooler AGA hotplate is designed for slowly bringing foods to a gentle simmer. Use it for heating milk, scrambled eggs and for making sauces - even tricky emulsion sauces, such as Hollandaise and Bearnaise, become easy. Used as a griddle, it will also make feather-light crepes and delicious toasted sandwiches.



R7 100 EXPANSION CONFIGURATIONS

Increase the capabilities of your AGA R7 100



MODEL: **AR7560W**

AGA R7 150 WITH WARMING PLATE HOTCUPBOARD — This configuration provides additional cooking space with a slow cook and warming oven, as well as a large warming plate atop the hotcupboard giving additional serving space for buffet styled meals.

- Product Dimensions: 36" H x 58 ¼" W x 27 ½" D (inches)
- Shipping weight (lbs): 1058 lbs. *(includes range, crate & pallet)*



MODEL: **AR7560I**

AGA R7 150 WITH INDUCTION HOTCUPBOARD — This configuration provides additional cooking space with a slow cook and warming oven as well as a large 12" H x 12" W single-zone induction cooking surface. The induction cook-top features touch-pad controls as well as a host of features including power boost, child safety lock, and 9 power settings.

- Product Dimensions: 36" H x 58 ¼" W x 27 ½" D (inches)
- Shipping weight (lbs): 1058 lbs. *(includes range, crate & pallet)*



MODEL: **AR7563G**

AGA R7 160 WITH DUAL FUEL MODULE — This configuration provides provides an additional conventional oven with electric broiler, convection oven with fan, and 4-top gas burners.

- Product Dimensions: 36" H x 62 ⅞" W x 27 ½" D (inches)
- Shipping weight (lbs): 1023 lbs. *(includes range, crate & pallet)*



MODEL: **AR7583WG**

AGA R7 210 WITH HOTCUPBOARD & DUAL FUEL MODULE — This configuration provides ample cooking space with slow cook and warming ovens, a large warming plate atop one of the hotcupboards, as well as an additional conventional oven with electric broiler, convection oven with fan, and 4-top gas burners.

- Product Dimensions: 36" H x 82 ½" W x 27 ½" D (inches)
- Shipping weight (lbs): 1266 lbs. *(includes range, crate & pallet)*



MODEL: **AR7783IG**

AGA R7 210 WITH INDUCTION AND DUAL FUEL MODULE — This configuration provides ample cooking space with slow cook and warming ovens, a large 12" H x 12" W single-zone induction cooking surface, as well as an additional conventional oven with electric broiler, convection oven with fan, and 4-top gas burners. The induction cooktop features touchpad controls as well as a host of features including power boost, child safety lock, and 9 power settings.

- Product Dimensions: 36" H x 80 ½" W x 27 ½" D (inches)
- Shipping weight (lbs): 1266 lbs. *(includes range, crate & pallet)*



AGArangeusa.com

R7 100 CLASSIC CAST IRON



Get to know the AGA R7 Series
by viewing an introductory
video featuring AGA Specialist
Penny Zako

<https://vimeo.com/435037943>



Specifications are subject to change without notice. Visit [agarangeusa.com](https://www.agarangeusa.com) for the most up-to-date information.