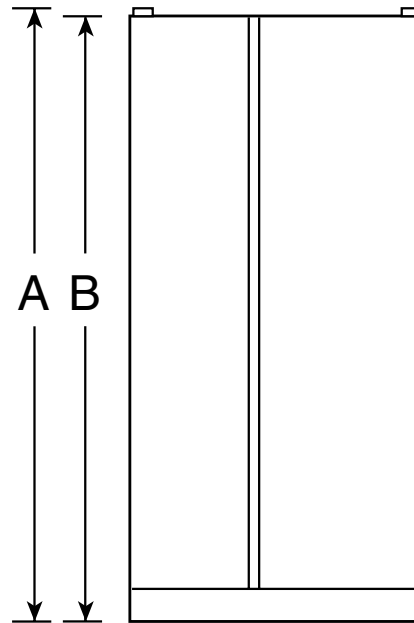


GSC23LGR

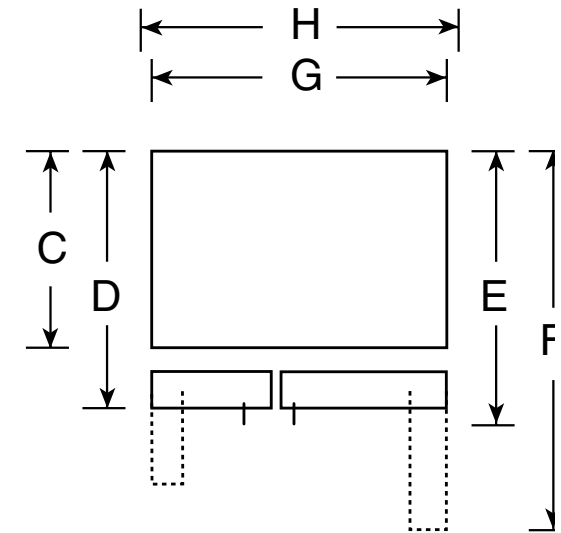
GE CustomStyle™ 22.6 Cu. Ft. Side-By-Side Refrigerator

Dimensions and Installation Information

| | | |
|--------------------|--|---------------|
| Overall Dimensions | Height to top of hinge (in.) A | 69-1/4 |
| | Height to top of case (in.) B | 68-3/4 |
| | Case depth without door (in.) C† | 23-7/8 |
| | Case depth less door handle (in.) D† | 26-3/4 |
| | Case depth with door handle (in.) E† | 29-1/5 |
| | Depth with fresh food door open 90° (in.) F† | 45-4/7 |
| | Width (in.) G | 35-3/4 |
| | Width with door open 90° inc. door handle (in.) H | 40-3/4 |
| Air Clearances | Each side (in.) | 1/8 |
| | Top (in.) | 1 |
| | Back (in.) | 1/2 |



Front View



Top View

†Water hook-up fits in back air clearance when calculating installation depth.

If installed against a wall, allow clearance of 14-3/16" on freezer side to remove bin.

Clearance required to remove fresh food full-size pan without disassembling is 18-15/16".

Allow additional space for any necessary leveling adjustments.

For answers to your Monogram®, GE Profile™ or GE® appliance questions, visit our website at ge.com or call GE Answer Center® service, 800.626.2000.

Dimension and installation information are shown in inches.



imagination at work



Listed by
Underwriters
Laboratories



Specification Revised 7/05

310141

GSC23LGR

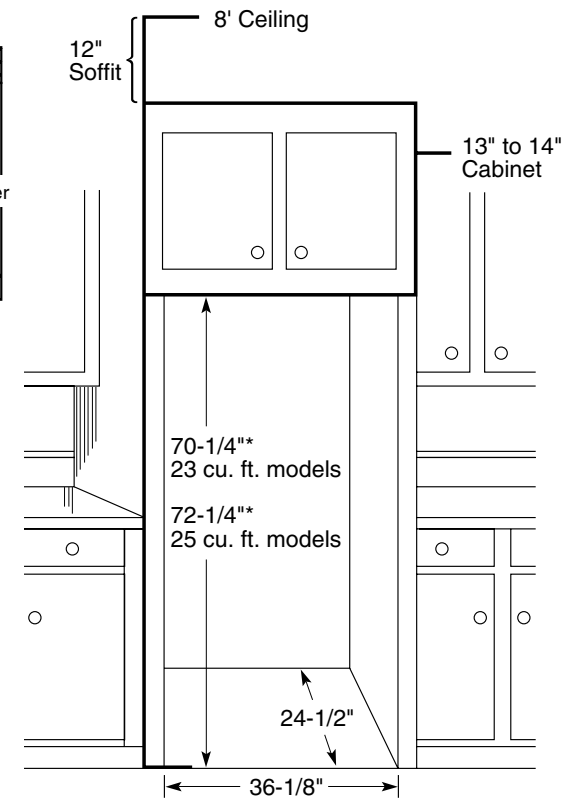
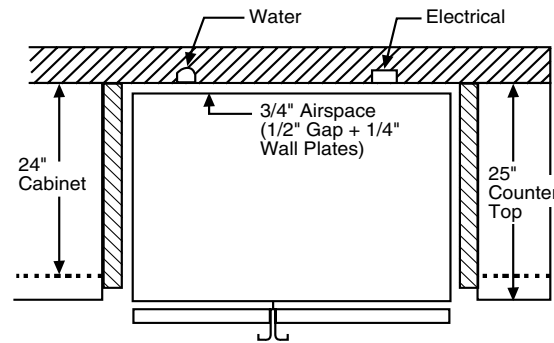
GE CustomStyle™ 22.6 Cu. Ft. Side-By-Side Refrigerator

Rough-In Dimensions and Installation Information

Installation Tips to Maximize the Built-In Look

- All wall/floor molding should be removed prior to installation.
- Water recess on rear wall recommended to prevent water line damage. 48" minimum length, 1/4" diameter water line tubing recommended.
- When possible, recess both copper water line and electrical outlet. (See local codes)
- Front and rear leveling legs are adjustable for the built-in look. (See owner's manual)

*The rough-in dimensions of 70-1/4"/72-1/4" are minimum and measured from the finished floor to top of opening (or the underside of the overhead cabinets) For Models with Trim Kit: If frameless style cabinets are planned for above the refrigerator, you may need to consider adding a maximum of 1/4" (70-1/2") to height of opening for 23 cu. ft. models and 1/8" (72-3/8") for 25 cu. ft. models to allow additional clearance between cabinet doors and top of refrigerator trim when cabinet doors are in open position.



For answers to your Monogram®, GE Profile™ or GE® appliance questions, visit our website at ge.com or call GE Answer Center® service, 800.626.2000.

Dimension and installation information are shown in inches.



imagination at work



Listed by
Underwriters
Laboratories



Specification Revised 7/05

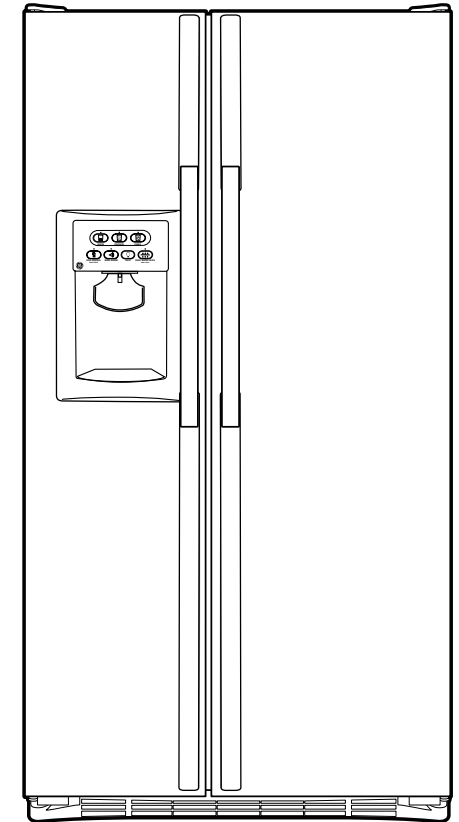
310141

GSC23LGR

GE CustomStyle™ 22.6 Cu. Ft. Side-By-Side Refrigerator

Features and Benefits

- CustomStyle™ configuration - Offers a built-in look without the built-in expense
- Upfront Electronic Touch Temperature Controls - Extremely precise and easy to use
- Integrated Ice™ System - Frees up valuable freezer space. It tilts down, providing easy access to bulk ice
- TurboCool™ Setting - “Revs up” the refrigerator, cooling it quickly after frequent door openings
- LightTouch! tall dispenser - Delivers chilled water cubed ice or crushed ice at the slightest touch
- GE SmartWater™ Plus Filtration System - Delivers clean, great-tasting water and ice through the LightTouch! Dispenser with indicator light
- FrostGuard™ Technology - Reduces freezer burn, so foods retain their texture and flavor
- QuickSpace™ Shelf - Quickly slides out of the way to make room for tall items
- Slide-Out, Spillproof Glass Shelves - Shelves slide out, and spills stay put
- Integrated Shelf Support System - Provides strong, yet flexible support
- Adjustable Humidity Vegetable/Fruit Crisper - Provides the ideal storage environment for fruits and vegetables
- ClearLook™ Adjustable Gallon Door Bin - Store gallon containers with ease
- Model GSC23LGRWW - White on white
- Model GSC23LGRBB - Black on black



imagination at work