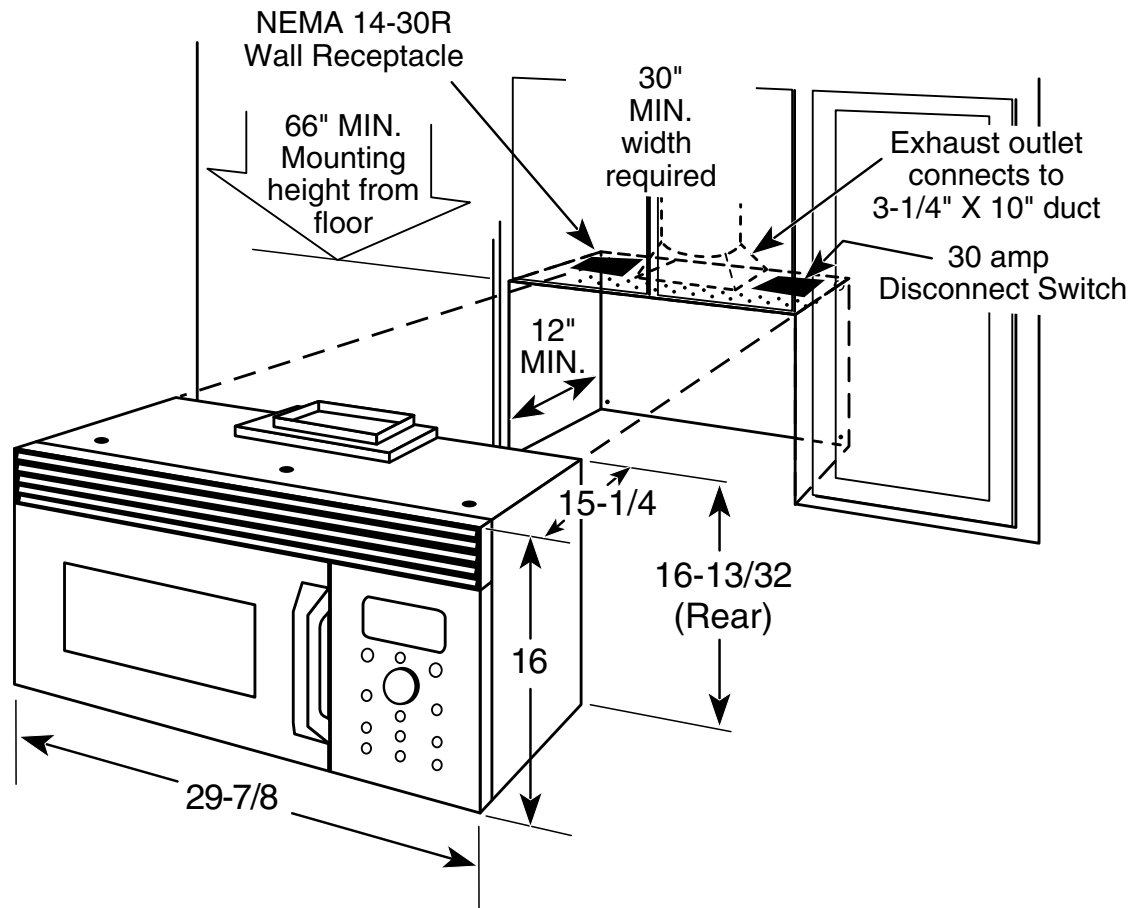




Profile™

## SCA2001F – Above-the-Cooktop Advantium™ Oven

### Dimensional Information (in inches)



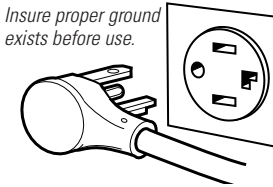
**Note:** Outside venting is optional. Vent (duct) can be horizontal or vertical.

Specification Revised 7/04

240434

**IMPORTANT:** PLEASE READ CAREFULLY. FOR PERSONAL SAFETY, THIS APPLIANCE MUST BE PROPERLY GROUNDED TO AVOID SEVERE OR FATAL SHOCK.

Insure proper ground exists before use.



DO NOT, UNDER ANY CIRCUMSTANCES, CUT, DEFORM, OR REMOVE ANY OF THE PRONGS FROM THE POWER CORD. DO NOT USE WITH AN EXTENSION CORD.

NEMA 14-30R Wall Receptacle

**Installation Information:** This information is not intended to be used for installing unit described. Before installing, consult installation instructions packed with product/kit for current dimensional data.



Listed by  
Underwriters  
Laboratories

For answers to your Monogram,® GE Profile™ or GE appliance questions, visit our website at [GEAppliances.com](http://GEAppliances.com) or call GE Answer Center® service, 800.626.2000.



Profile™

## SCA2001F – Above-the-Cooktop Advantium™ Oven

### Hood Exhaust Duct

Outside ventilation requires a HOOD EXHAUST DUCT. Read the following carefully.

#### EXHAUST CONNECTION:

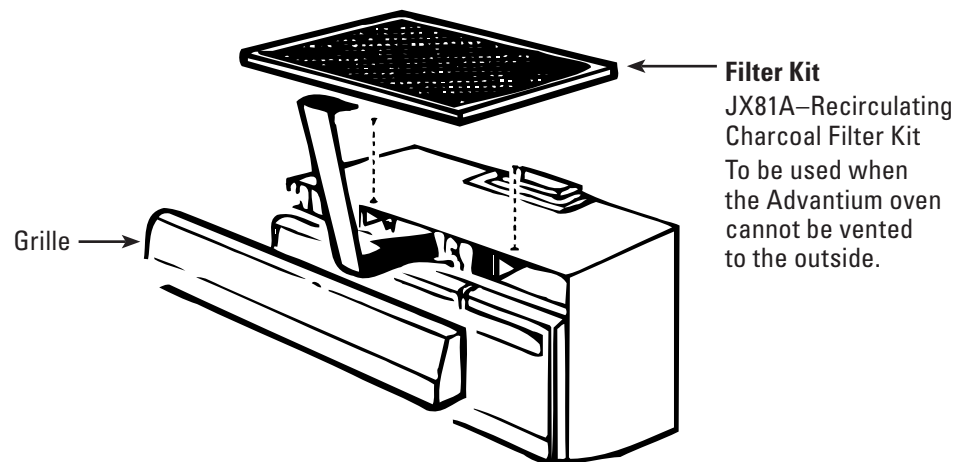
The hood exhaust has been designed to mate with a standard 3-1/4" x 10" rectangular duct.

If a round duct is required, a rectangular-to-round transition adaptor must be used. Do not use less than a 6" diameter duct.

#### REAR EXHAUST:

If a rear or horizontal exhaust is to be used, care should be taken to align exhaust with the space between studs, or wall should be prepared at the time it is constructed by leaving enough space between the wall studs to accommodate exhaust.

### Filter Kit Accessory



Specification Revised 7/04

240434

#### MAXIMUM DUCT LENGTH:

For satisfactory air movement, the total duct length of 3-1/4" x 10" rectangular or 6" diameter round duct should not exceed 140 equivalent feet.

**ELBOWS, TRANSITIONS, WALL AND ROOF CAPS**, etc., present additional resistance to airflow and are equivalent to a section of straight duct which is longer than their actual physical size. When calculating the total duct length, add the equivalent length of all transitions and adaptors plus the length of all straight duct sections. The chart below shows the approximate feet of equivalent length of some typical ducts.

Duct	Equivalent Feet
<b>A.</b> Rectangular-To-round Transition Adaptor	5 ft.
<b>B.</b> Wall Cap	40 ft.
<b>C.</b> 90° Elbow	10 ft.
<b>D.</b> 45° Elbow	5 ft.
<b>E.</b> 90° Elbow	25 ft.
<b>F.</b> 45° Elbow	5 ft.
<b>G.</b> Roof Cap	24 ft.

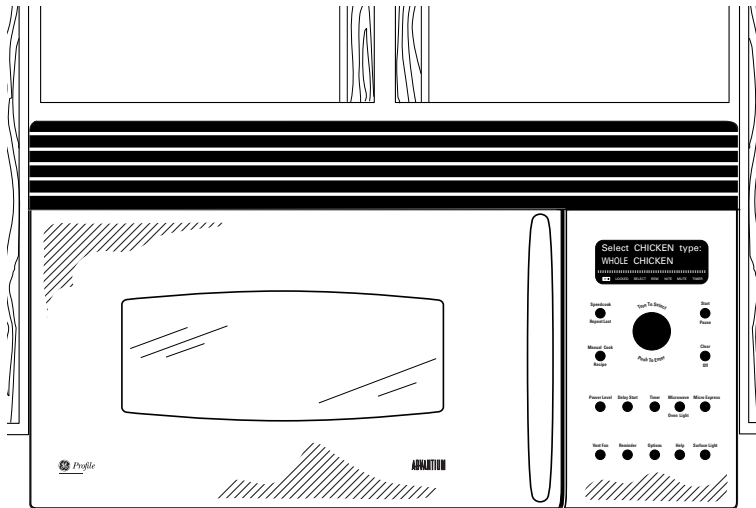


For answers to your Monogram,® GE Profile™ or GE appliance questions, visit our website at [GEAppliances.com](http://GEAppliances.com) or call GE Answer Center® service, 800.626.2000.



*Profile™*

## SCA2001F – Above-the-Cooktop Advantium™ Oven



### Features and Benefits

- Revolutionary Speedcook Technology Cooks Oven-Quality Food Up To Eight Times Faster Than a Convection Oven
- Over 100 Pre-Programmed Menu Items, Repeat Last, Help and Demo Modes
- Bakes, Browns, Broils, Grills and Roasts—All with No Preheating
- Converts to a Fully Functional 950 Watt Sensor Microwave Oven
- Family-Size Oven with Stainless Steel Interior
- Microwave Oven Features Humidity Sensor and Auto Defrost/Time Defrost
- Cooking Complete Reminder
- Interior Oven Light
- Child-Lock-Out
- Two-Speed, High Capacity Exhaust Fan
- Full View Cooktop Lighting with Night Light
- Sculptured Handle
- Frameless Glass Oven Door with Window
- Cookbook and Pan Set Included
- Model SCA2000FWW – White on white
- Model SCA2000FBB – Black on black
- Model SCA2000FCC – Bisque on bisque
- Model SCA2001FSS – Stainless steel