



clothes care

frontload laundry pair

a product of
ecomaginationSM



AdoraTM
series

Frontload laundry feature gallery...



Clothes care

HydroHeater™

Increases the water temperature to sanitize and kill more than 99% of many common bacteria found in home laundry.*



Performance

HydroMotion™ wash action

Reversing wash action offers great cleaning performance with gentle wash motion.



Capacity

3.7 cu. ft. king-size capacity**

Makes room for more items, such as a king-size comforter or 22 full-size bath towels.



Savings

Uses as little as 10 gallons of water for a small load and 15 gallons for an average-size load, which saves up to 23 gallons per load, or 61% water.***

Dependability

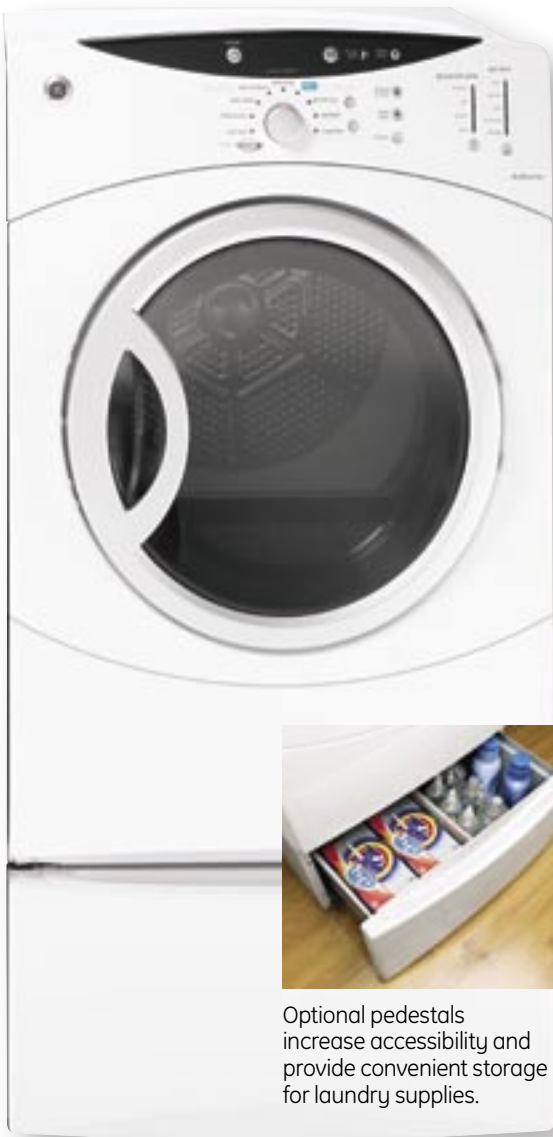
From the makers of America's most dependable washers!†



WHDVH626FWW Depot Direct (412-453)
SBSD227FWW Depot Direct (525-265)
Optional pedestal available

a product of
ecomagination™

...everything you need.



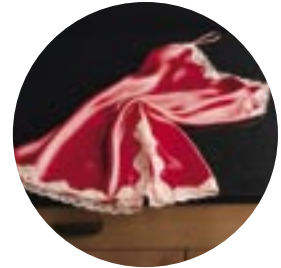
Optional pedestals increase accessibility and provide convenient storage for laundry supplies.

DHDVH52EFWW Depot Direct (411-392)
DHDVH52GFWW Depot Direct (412-309)

Clothes care

Sensor Dry Plus

Moisture and temperature settings provide more consistent clothes care.



Performance

Dewrinkle cycle

Tumbles clothes without heat to reduce creasing and wrinkling.



Capacity

7.0 cu. ft.

king-size capacity

Large enough to handle anything the washer sends its way.



Savings

King-size drum

handles even the largest loads, saving you time.

When the laundry piles up, the washer and dryer step up.

*When selecting the washer water temperature "Sanitize" and soil level setting "Heavy" with home hot water heater set at 120°F.

**Washes equivalent amount of clothes as a 3.7 cu. ft. agitator machine, per IEC ratios.

***As compared to a typical washer, WWSE5240.

†Based on an independent national survey of consumers who have purchased a leading brand of washer from 2001-2004.

As an ENERGY STAR® partner, GE has determined that the appliances marked with the ENERGY STAR logo meet the ENERGY STAR guidelines for energy efficiency.

The inside story: GE® frontload laundry pair

Adora series by GE® frontload washer

1 Load-sensing adaptive fill

Washer automatically fills with just the right amount of water for the load.

2 QuietBalance™ suspension system

Ensures reliable, quiet operation for flexible installation.

3 Stainless steel wash basket

Professional grade stainless steel wash basket stands up to the toughest loads and is built for years of reliable use.

4 HydroMotion™ wash action

Reversing wash action offers great cleaning performance with gentle wash motion.

5 SudsLogic™ technology

If too many suds are detected it automatically adapts to prevent over-sudsing.



Dependability

From the makers of America's most dependable washers.*

*Based on an independent national survey of consumers who have purchased a leading brand of washer from 2001-2004.



a product of
ecomaginationSM



2

1

5

4

1

3

Adora series by GE® frontload dryer

1 Dual thermistors

Combined with sensor bars, these help maintain consistent heat and ensure the right level of dryness is reached.

2 Removable lint filter reminder light

Reminds you to clean the upfront filter.

3 QuietPower™ design

Motor and blower isolators, DuraDrum™ interior and sound-dampening materials ensure quiet operation.

4 Deluxe dryer rack

Allows tumble-free drying of items like sweaters.

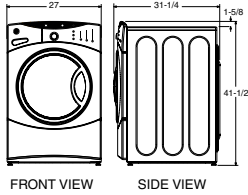
5 DuraDrum™ interior

Handles king-size items and family-size loads with a durable scratch-resistant interior.

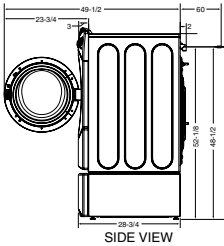


Adora series by GE® frontload laundry pair

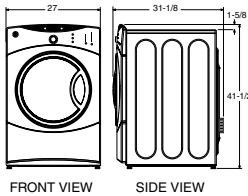
Washer dimensions (in inches)



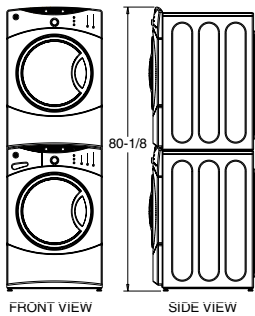
Washer dimensions with door open (in inches)



Dryer dimensions (in inches)



Stacked dimensions (in inches)



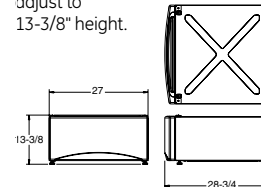
		WHDVH626FWW
Capacity		
Capacity		King-size
Cubic feet		3.7
Features		
ENERGY STAR®		●
Total water usage		●
Wash/rinse temperatures		5 with sanitize
Water levels		Automatic
HydroMotion™ wash		●
HydroHeater™		●
SudsLogic™		●
Number of cycles		26
Custom cycles		●
WOOLMARK® cycle		●
Specialty cycles		Active wear
Detergent dispenser (liquid/powder)		●
Bleach dispenser		●
Fabric softener dispenser		●
Auxiliary dispenser		●
Control type		Rotary-electronic
End-of-cycle signal		Adjustable
Wash/Spin speed combinations		4 (1000 RPM spin speed)
Water temperature system		HydroTemp™s
Colors		●
Delicates		●
Easy Care		●
Handwash		●
Whites		●
Quick Wash		●
Optional soil levels—Extra Light		●
Optional soil levels—Heavy Soil		●
Optional soil levels—Light Soil		●
Optional soil levels—Normal Soil		●
2nd rinse		●
Adaptive capabilities		Load size
Cycle countdown		with LED indicators
Cycle status lights		●
Delay start		●
Drain and spin		●
Prewash		●
Speed wash		●
Stain wash		●
Door style		See-thru glass
Noise package		QuietPower™
Leveling legs		●
Stainless steel wash basket		●
Handle		Dura Grip
Pedestal available at additional cost		●
Appearance		
Colors available		White on white,
Weights & Dimensions		
Approx. shipping weight (lbs.)		225
Flexible installation		Undercounter, stacked, side-by-side
Power/Ratings		
Circuit breaker or Time delay fuse		15 or 20 amps
Volts/Hertz		120V; 60Hz
Granite gray available in 2006.		

		DHDVH52EF/GFWW
Capacity		
Capacity		King-size
Cubic feet		7.0
Features		
Moisture sensor		Sensor Dry Plus
Control type		Rotary-electronic
Cycle countdown		with LED indicators
Cycle status lights		●
Dual thermistors		●
Heat selections		5
Number of cycles		Multiple
Custom cycles		●
Cotton cycle		●
Delicate cycle		●
Easy Care cycle		●
Mixed loads cycle		●
Optional dryness levels—Damp		●
Optional dryness levels—Dry		●
Optional dryness levels—Less dry		●
Optional dryness levels—More dry		●
Timed dry—actual minutes on timer		90
Add Time		●
Dewrinkle		●
Damp dry signal		●
Dryer interior light		●
Dryer rack		Deluxe
End-of-cycle signal		Adjustable
DRYEL® cycle		●
100% front serviceable		●
Door style		See-thru glass
Drum interior		DuraDrum
Leveling legs		●
Revers-A-Door		●
Exhaust options (Electric/Gas)		4/3
Handle		Dura Grip
Pedestal available at additional cost		●
Appearance		
Colors available		White on white
Weights & Dimensions		
Approx. shipping weight (lbs.) (Electric/Gas)		125/130
Flexible installation		Undercounter, stacked, side-by-side
Granite gray available in 2006.		

Pedestal dimensions (in inches)

SBSD227FWW-white

This optional 12" pedestal raises the door opening and height of the washer or dryer. Feet on pedestal allow it to adjust to 13-3/8" height.



GE Consumer & Industrial
Appliances
General Electric Company
Louisville, KY 40225
ge.com
homedepot.com